

Parts Manual

ET202

Turbine Blower





500 Venture Drive
Orrville Oh 44667
www.ventrac.com

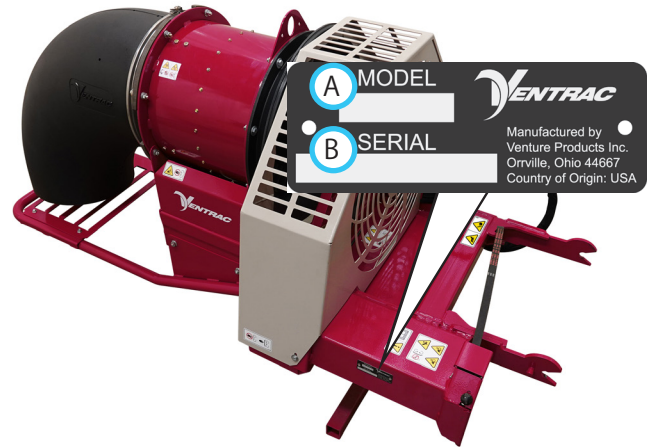
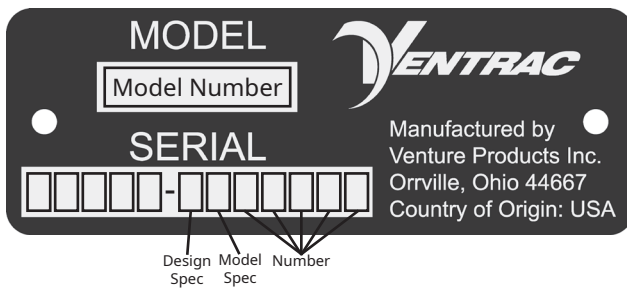
View all manuals



Visit ventrac.com/manuals for the latest version of this parts manual.

A downloadable operator's manual is also available.

Serial Number Description



Notes

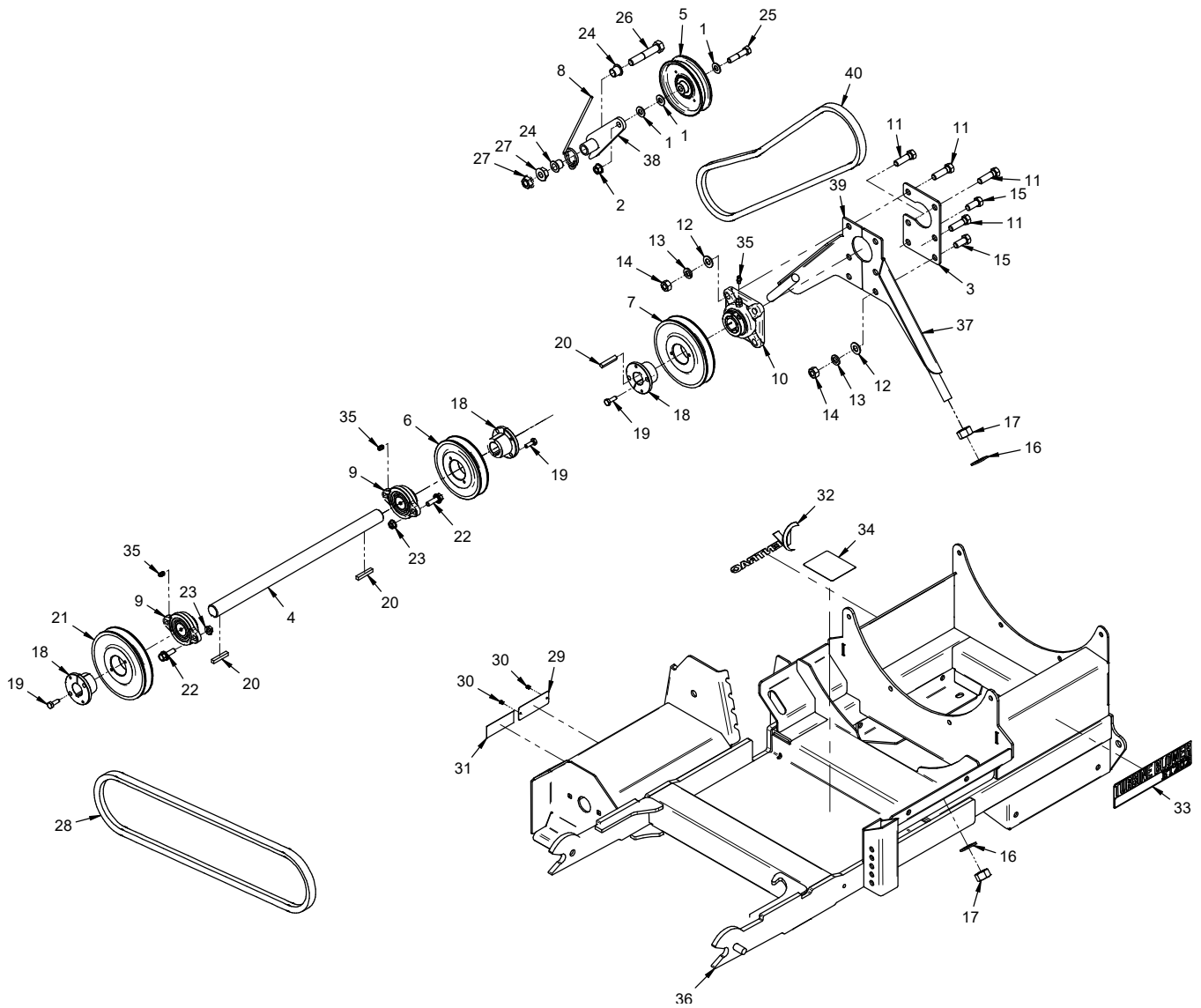
- If any component requires replacement, use only original Ventrac replacement parts.
- When ordering new components, be sure to order all required safety decals. All current safety decals must be affixed to the replacement components prior to installation of the component.

TABLE OF CONTENTS

PARTS	PAGE 4
Main Frame & Blower Drive	4
Shields, Jack Stand & Caster Wheel	6
Hydraulic Nozzle Rotation Motor	8
Blower Mount & Discharge Nozzle.....	10
Turbine Assembly	12
OPTIONS	PAGE 14
Light Kit (70.8230).....	14

PARTS

ILLUSTRATED DRAWING Main Frame & Blower Drive



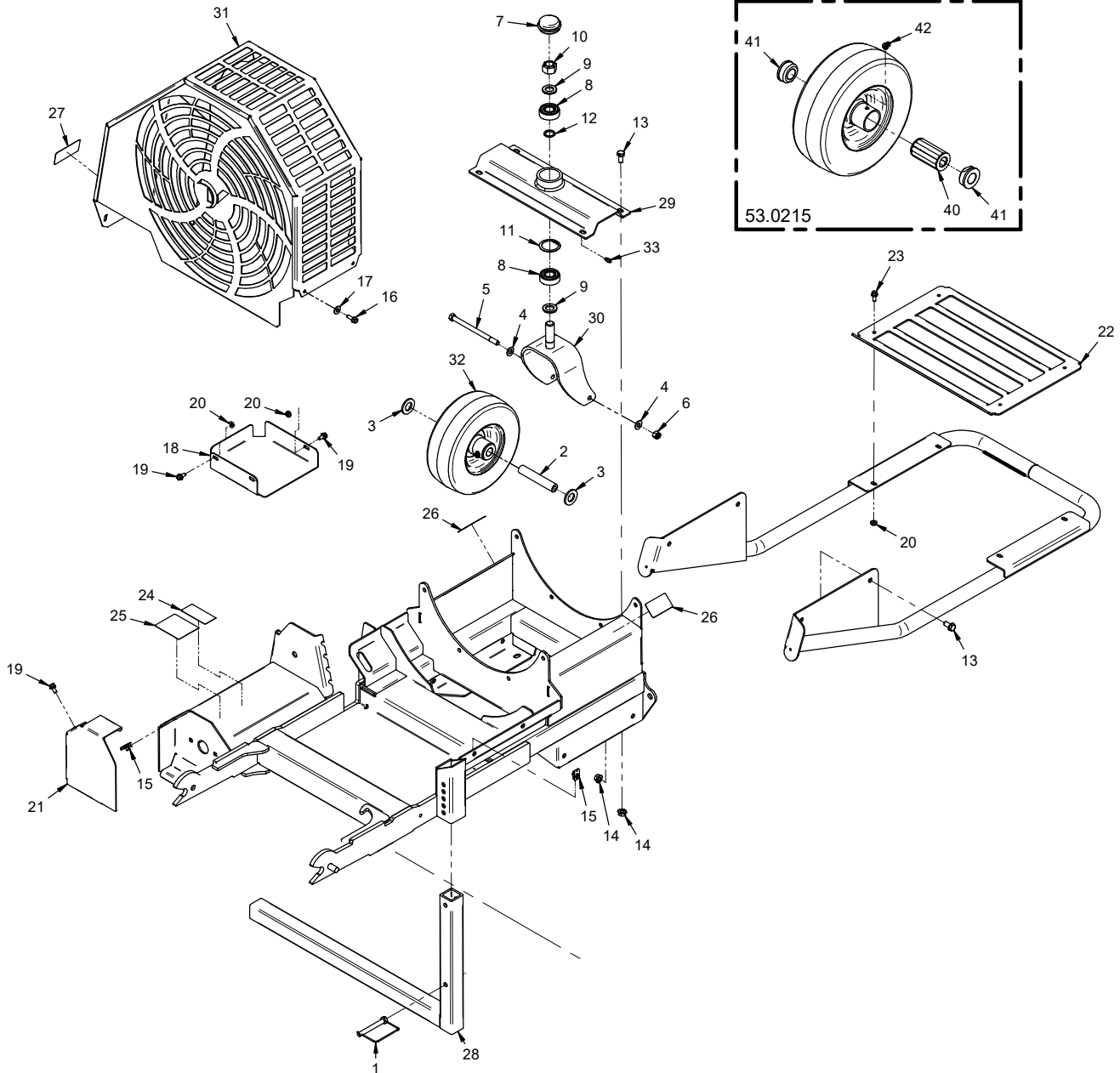
PARTS

Main Frame & Blower Drive

REF.	PART NO.	DESCRIPTION	QTY.
1	95.06	Washer, Flat 3/8 SAE	3
2	99.SF06	Nut, SRF 3/8-16 USS	1
3	64.1141	Plate, Main Bearing Backing	1
4	80.0349	Shaft, 1 X 17-1/4L Keyed En	1
5	83.0037	Pulley, Idler Flat 4" X 3/8	1
6	83.BK50H	Pulley, 5" H-Bush	1
7	83.BK57H	Pulley, 5.7" H-Bush	1
8	41.0066	Spring, Single Torsion Lh	1
9	55.FB16016-1	Bearing, Flange Block 1"	2
10	55.FB22016-2	Bearing, Flange, 1"	1
11	90.0712	Bolt, 7/16-14 USS x 1-1/2	4
12	95.07	Washer, Flat 7/16 SAE	6
13	96.07	Washer, Lock 7/16	6
14	92.07	Nut, 7/16-14 USS	6
15	90.0708	Bolt, 7/16-14 USS x 1	2
16	95.10	Washer, Flat 5/8 SAE	4
17	93.10	Nut, 5/8-18 SAE	4
18	83.H16S	Bushing, 1" Split 1/4" Key	3
19	90.0406-1	Bolt, 1/4-20 USS x 3/4 Blk	6
20	85.K0412	Key, 1/4 X 1-1/2	3
21	83.BK55H	Pulley, 5.5" H-Bushing	1
22	99.SF0508	Bolt, SRF 5/16-18 USS x 1	4
23	99.SF05	Nut, SRF 5/16-18 USS	4
24	85.B0027	Bushing, 1/2 ID X 5/8 OD X 5/8	2
25	90.0614	Bolt, 3/8-16 USS x 1-3/4	1
26	90.0822	Bolt, 1/2-13 USS x 2-3/4	1
27	99.SF08	Nut, SRF 1/2-13 USS	2
28	81.B046	Belt, B46R	1
29	N/A	Plate, Ventrac Serial Number	1
30	04.0007	Rivet, Pop 1/8 X 1/8 SS	2
31	00.0100	Decal, Built in the USA	1
32	00.0688	Decal, Ventrac White	1
33	00.0689	Decal, ET202	1
34	00.0625	Decal, Shield Missing	1
35	29.GF0001	Grease Ftg, 1/4 SAE ST	3
36	ET-6000	Frame, Main ET202	1
37	64.1119	Bracket, Main Bearing MT Right	1
38	64.1121	Tightner, Main Drive Belt	1
39	64.1140	Bracket, Main Bearing MT Left	1
40	81.B047	Belt, B47	1

PARTS

ILLUSTRATED DRAWING Shields, Jack Stand & Caster Wheel



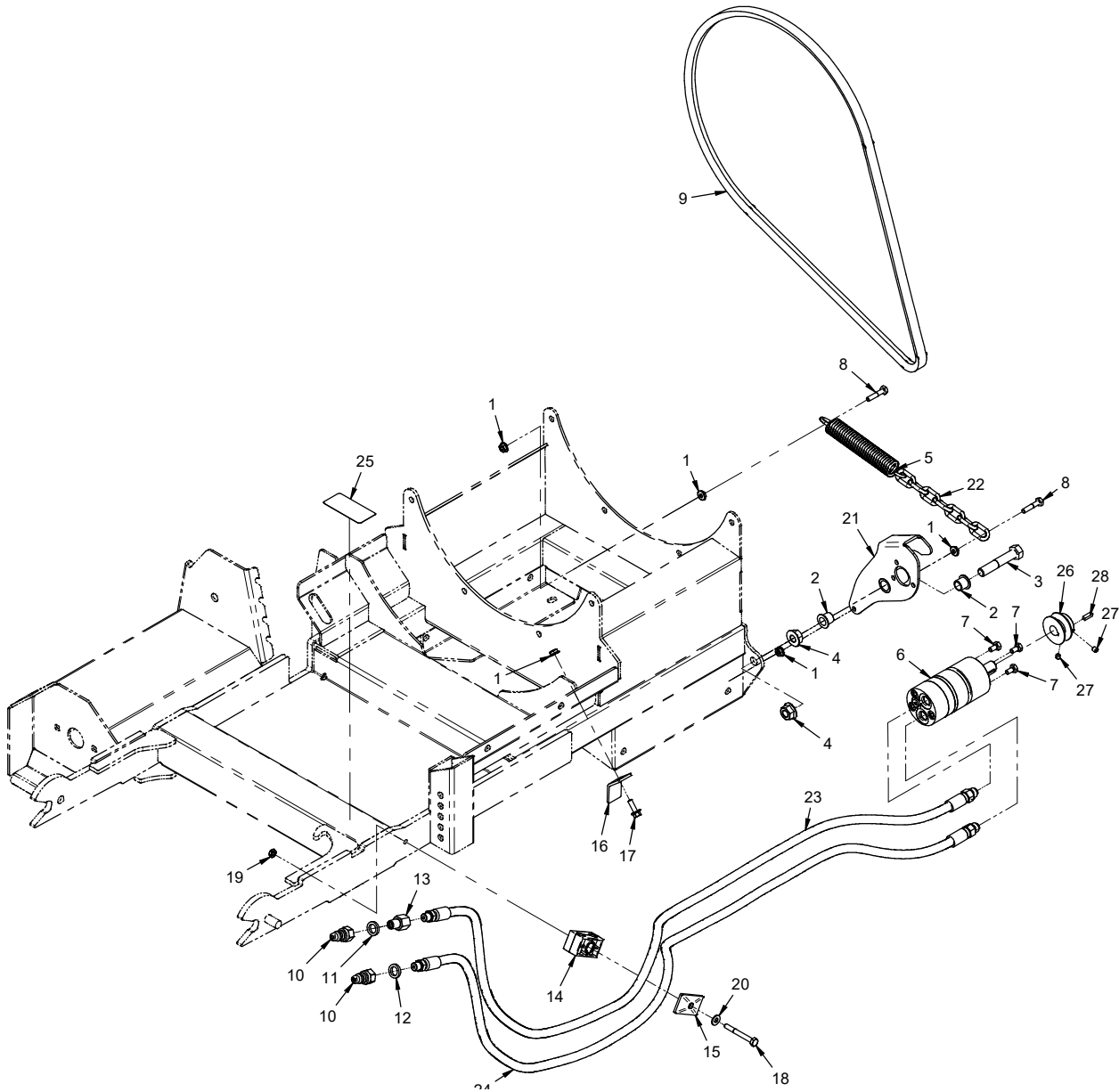
PARTS

Shields, Jack Stand & Caster Wheel

REF.	PART NO.	DESCRIPTION	QTY.
1	03.0015	.Pin, Safety Snap 3/8 X 3"	1
2	50.0055	.Tube, Axle-Wheel Lm	1
3	95.12	.Washer, Flat 3/4 SAE	2
4	95.06	.Washer, Flat 3/8 SAE	2
5	90.0644	.Bolt, 3/8-16 USS x 5-1/2	1
6	99.A06N	.Locknut, Nylon 3/8-16.	1
7	53.0080	.Dust Cap, Bearing Mower Caster	1
8	55.0023	.Bearing, Ball .75 ID X 1.78 OD	2
9	99.B0057-2	.Washer, Mach 3/4 x 1-1/4 10 GA ZP	2
10	99.A12NF	.Locknut, Stover 3/4-16 SAE	1
11	04.0013	.Snap Ring, Int .062 X 1.75	1
12	99.B0052	.Shim, Steel 3/4 x 1 x .062 Blk	1
13	99.SF0606	.Bolt, SRF 3/8-16 USS x 3/4	8
14	99.SF06	.Nut, SRF 3/8-16 USS	8
15	99.E0046	.Nut, "U" 1/4-20 Extruded	5
16	99.SF0406-1	.Bolt, SMF 1/4-20 X 3/4.	4
17	94.04	.Washer, Flat 1/4 USS	4
18	ET-1018	.Shield, Turbine Belt Lower	1
19	99.SF0404-1	.Bolt, SMF 1/4-20 X 1/2.	4
20	99.SF04	.Nut, SRF 1/4-20 USS	7
21	60.0665	.Shield, Drive Pulley	1
22	ET-1014	.Plate, Air Deflector	1
23	99.SF0405-1	.Bolt, SMF 1/4-20 X 5/8.	4
24	00.0619	.Decal, Read Operator's Manual	1
25	00.0626	.Decal, Entanglement Hazard	1
26	00.0631	.Decal, Finger/Hand Entanglement	2
27	00.0632	.Decal, Moving Parts Hazard	1
28	ET-6001	.Stand, ET202	1
29	64.1120	.Frame, Caster Wheel Mount	1
30	50.0185	.Spindle, Tire Swivel 9"	1
31	64.1124	.Screen, Inlet	1
32	53.0215	.Wheel, Asm 9 x 3.5 x 4 Flatfree	1
33	29.GF0001	.Grease Ftg, 1/4 SAE ST	1
40	55.0115	.Bearing, Roller 2.50" Long	1
41	55.0114	.Retainer, Roller Bearing 3/4"	2
42	29.GF0003	.Grease Ftg, 1/4 SAE 45	1

PARTS

ILLUSTRATED DRAWING Hydraulic Nozzle Rotation Motor



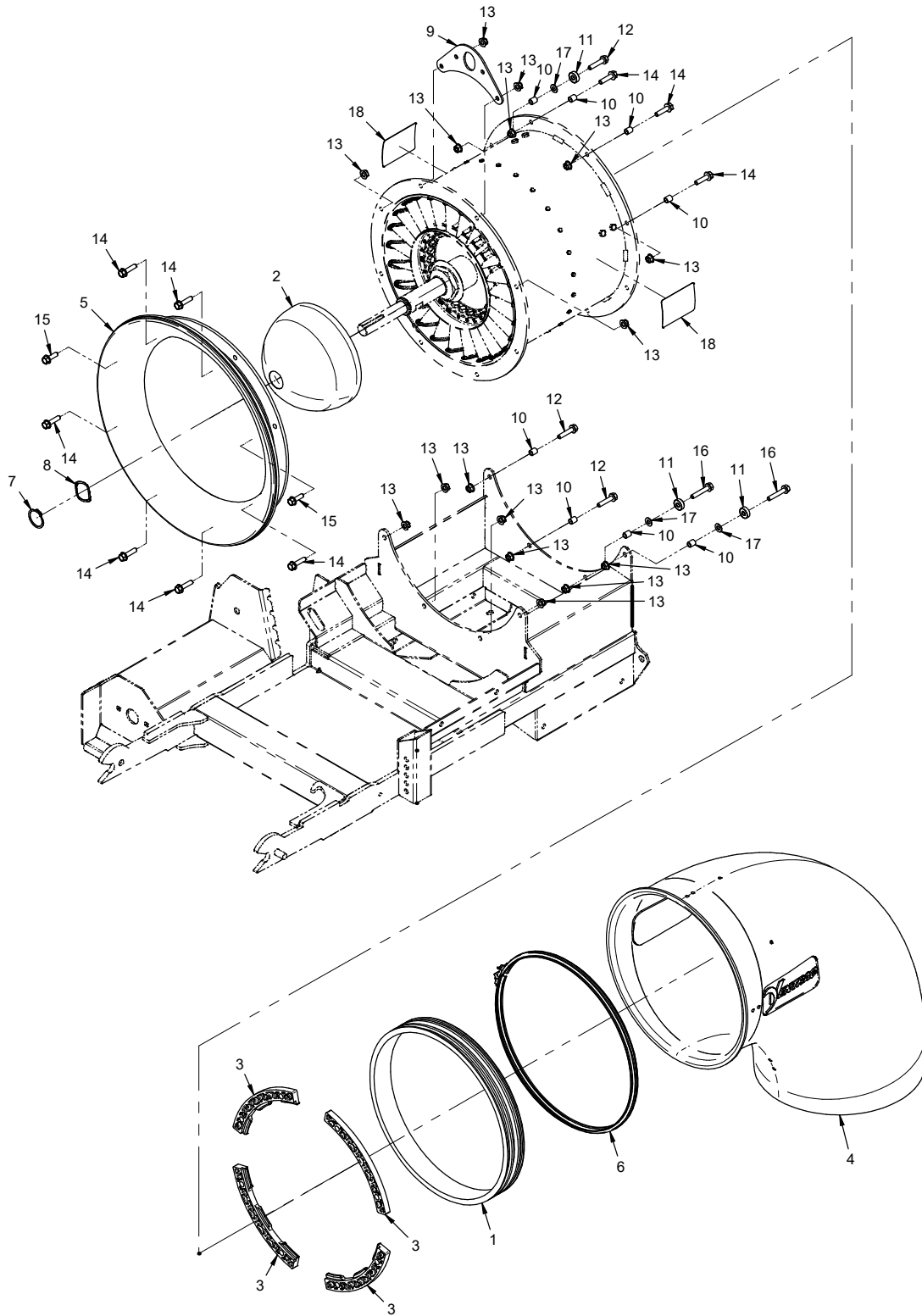
PARTS

Hydraulic Nozzle Rotation Motor

REF.	PART NO.	DESCRIPTION	QTY.
1	99.SF04	Nut, SRF 1/4-20 USS	5
2	85.B0027	Bushing, 1/2 ID X 5/8 OD X 5/8	2
3	90.0822	Bolt, 1/2-13 USS x 2-3/4	1
4	99.SF08	Nut, SRF 1/2-13 USS	2
5	41.0048	Spring, Ext. 1 Od X 6	1
6	21.0113	Motor, Hyd 1.93 Cu.In.	1
7	91.0404	Bolt, 1/4-28 SAE x 1/2	3
8	90.0410	Bolt, 1/4-20 USS x 1/1-4"	2
9	81.AX56	Belt, AX56	1
10	23.0104	Coupler, Quick Male 1/4	2
11	05.0117	Washer, .544 ID x .817 x .14 Yel	1
12	05.0116	Washer, .544 ID x .817 x .14 Red	1
13	29.0092	Fitting, .025 Orifice 1/4 Pipe	1
14	44.0256	Clamp, Hyd Hose 12.7mm ID 2 Cavity (Set of 2)	1
15	44.0229	Cover Plate, Group 2D (2 Cavity)	1
16	64.1125	Clamp, Hose	1
17	99.SF0406	Bolt, SRF 1/4-20 X 3/4	1
18	90.0418	Bolt, 1/4-20 USS x 2-1/4	1
19	99.A04	Locknut, Stover 1/4-20 USS	1
20	95.04	Washer, Flat 1/4 SAE	1
21	64.1122	Mount, Rotating Motor	1
22	81.0150	Chain, 3/16 x 7 Links 7-1/8"	1
23	20.0214	Hose, 1/4x63.00 SAE 100R17 AR	1
24	20.0214	Hose, 1/4x63.00 SAE 100R17 AR	1
25	00.0621	Decal, High Pressure Fluid Hazard	1
26	83.AS1710	Pulley, AS 1.7" 5/8" Bore	1
27	85.SS19	Set Screw, 1/4-20 x 1/4"	2
28	85.K0307	Key, 3/16 x 5/8	1

PARTS

ILLUSTRATED DRAWING Blower Mount & Discharge Nozzle



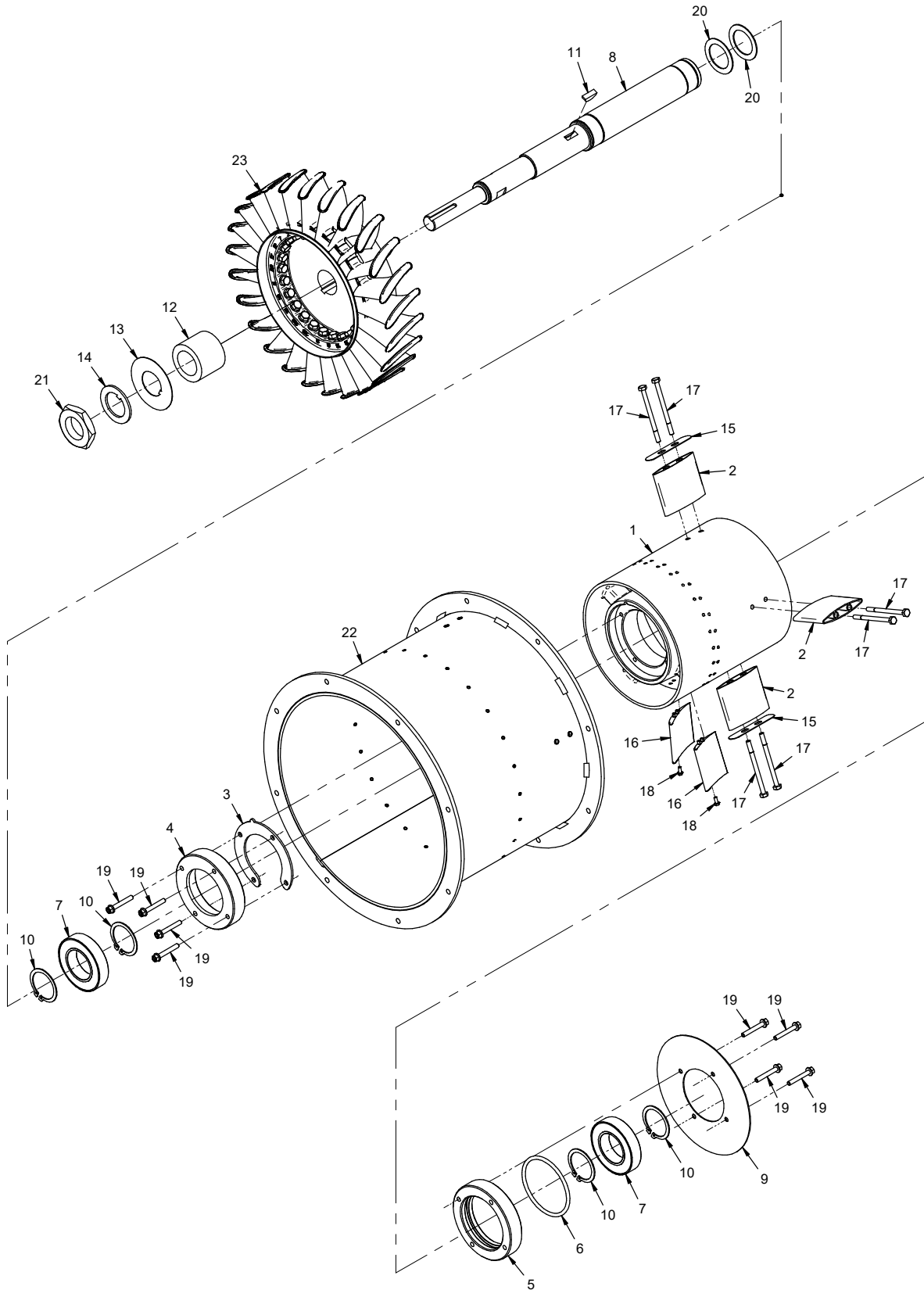
PARTS

Blower Mount & Discharge Nozzle

REF.	PART NO.	DESCRIPTION	QTY.
1	ET-1050	Pulley, Nozzle	1
2	ET-1051	Cap, Intake	1
3	ET-1052	Guide, Nozzle	4
4	ET-1071	Nozzle, Turbine	1
5	ET-1053	Bell, Inlet	1
6	11.0089	Clamp, Band Turbine Nozzle	1
7	04.0053	Snap Ring, Ext. .050 x 1.333	1
8	ET-1065	Washer, Wavy 1.464 ID	1
9	ET-1012	Plate, Lift Ring	1
10	64.2036	SPACER, .322 x .438 x .500L	8
11	55.0118	Bearing, Ball .3125in x 22mm x 7mm	3
12	99.SF0512-1	Bolt, SMF 5/16-18 X 1-1/2	3
13	99.E0102	Nut, Locking Flange 5/16-18	16
14	99.SF0510-1	Bolt, SMF 5/16-18 USS X 1-1/4	9
15	99.SF0508-1	Bolt, SMF 5/16-18 x 1	2
16	99.SF0514-1	Bolt, SMF 5/16-18 x 1-3/4	2
17	95.05	Washer, Flat 5/16 SAE	3
18	00.0682	Decal, Turbine Blower Hazard	2

PARTS

ILLUSTRATED DRAWING Turbine Assembly



PARTS

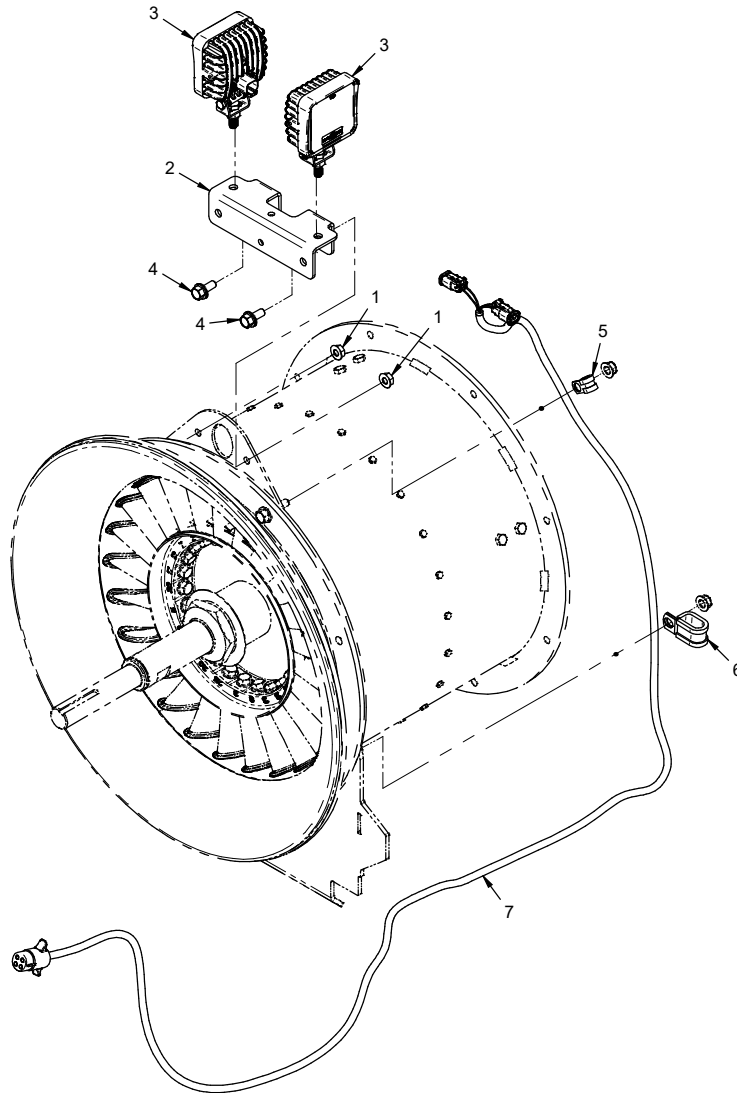
Turbine Assembly

REF.	PART NO.	DESCRIPTION	QTY.
1	ET-1054	Housing, Inner	1
2	ET-1055	Mount, Fin	4
3	ET-1057	Cap, End	1
4	ET-1058	Cap, Bearing	1
5	ET-1059	End Cap, O-Ring	1
6	26.0053	O-Ring, 3.600 ID x 4.020 OD	1
7	55.0117	Bearing, Ball 50mm x 90mm x 20mm	2
8	ET-1066	Shaft, Turbine	1
9	ET-1060	PLATE, CENTER	1
10	04.0052	Snap Ring, Ext. .062 x 1.819	4
11	85.W0508	Key, Woodruff 5/16 x 1	1
12	ET-1061	Spacer, Rotor	1
13	ET-1063	Washer, 1.655 ID x 3.5 OD Tab	1
14	ET-1064	Washer, 1.655 ID x 2.5 OD Tab	1
15	ET-1062	Spacer, Fin	A/R*
16	ET-1056	Vane, Stator	24
17	90.0428	Bolt, 1/4-20 USS x 3-1/2	8
18	99.K0181	Bolt, SRF #8-32 x 3/8"	24
19	99.SF0414-1	Bolt, SMF 1/4-20 x 1-3/4	8
20	99.B0142	Washer, 1.645 ID x 2.35 OD x .060	2
21	99.E0153	Nut, 1-5/8-12 UN LH	1
22	ET-1070	Housing, Outer	1
23	ET-6005	Asm, Rotor	1

*Use the spacers to center the turbine shaft in the outer housing.

OPTIONS

ILLUSTRATED DRAWING Light Kit (70.8230)



OPTIONS

Light Kit (70.8230)

REF.	PART NO.	DESCRIPTION	QTY.
1	99.SF05	Nut, SRF 5/16-18 USS	2
2	ET-1013	Bracket, Light Mount	1
3	33.0087	Light, LED Flood with Bracket	2
4	99.SF0506	Bolt, SRF 5/16-18 USS x 3/4	2
5	11.0080	Clamp, Cushioned 3/8"	1
6	11.0046	Clamp, Cushioned 1/2" 2-Tube	1
7	32.0236	Harness, Wire Light ET/KA	1